

Presentation to

Manukau Harbour Forum Symposium

by

Manukau Harbour Restoration Society

Bronwen Turner, Deputy Chair, MHRS
Friday 10th June, 2016
Mangere Arts Centre



MHRS Presentation: Overview

- *MHRS – who we are and our vision*
- *Odd Harbour Facts*
- *What we've been doing and our work plans:*
 1. *Water quality*
 2. *Port of Onehunga redevelopment*
 3. *Infrastructure*
 4. *Transmission lines*
 5. *Recreational access*
 6. *Mangroves*
 7. *Birds and fish*
 8. *Clean up*
 9. *Plans*
 10. *Management*
- *Summary – Key Actions*

Change in mindset of decisionmakers, CCOs, Council staff

More science, honesty, collaboration, innovation and funding



MHRS Presentation: Vision and focus

- ***MHRS – who we are***
Nonprofit; Formed in 2011
Evolved from Onehunga Foreshore Restoration – lack of stewardship; need for a whole harbour entity
About 200 members from around harbour
Executive committee – 10 members – all volunteers; no staff
www.mhrs.org.nz
- ***MHRS - our vision***
Restore the Manukau Harbour as a recreational and environmental gem
- ***The fundamental test: Water quality that allows us to***
 - *eat kai safely from anywhere in the harbour*
 - *swim safely anywhere in the harbour*
- ***MHRS - our focus: Water quality, access and infrastructure, management, changed attitudes and decisions***



MHRS Presentation: Odd Facts

- *Manukau is NZ's and Auckland's second largest harbour*
- *Manukau Harbour is NZ's most important habitat for shore birds*
- *Onehunga was Auckland's first port*
- *Until the 1950's, regular ferry service on the harbour to over a dozen wharves and jetties*
- *Harbour had numerous boat ramps, remaining now in disrepair*
- *ARC report 2009 – less than 2% of West Coast snapper originate from the Manukau; 98% from the Kaipara; why?*
- *Wastewater discharges from MTP constitute the largest “fresh” water stream in Auckland;*
 - *Will increase with Central Interceptor, southern development*
 - *Also more stormwater and contaminants*
- *Lost opportunity with intensification: Developers on isthmus not required to separate storm and wastewater*
- *Next tranche of water from Waikato River by Auckland will take over 50% of surface rights of horticultural growers in Franklin*
- *The harbour's water quality was downgraded by Auckland Council from D to E in 2014; cause?*
- *50% of Sanford's annual inshore catch is landed at Onehunga; also important to Aotearoa Fisheries, independents*
- *Auckland's population is forecast to grow by over 1 million people; harbour access will be in demand*
- *Within 20 minutes of launching from Little Huia and 45 minutes from Onehunga, recreational deep sea fishing grounds are accessed*
- *Large regional infrastructure projects are planned for the harbour's environs – transportation, wastewater, SHA's*
- *There's no harbour plan*

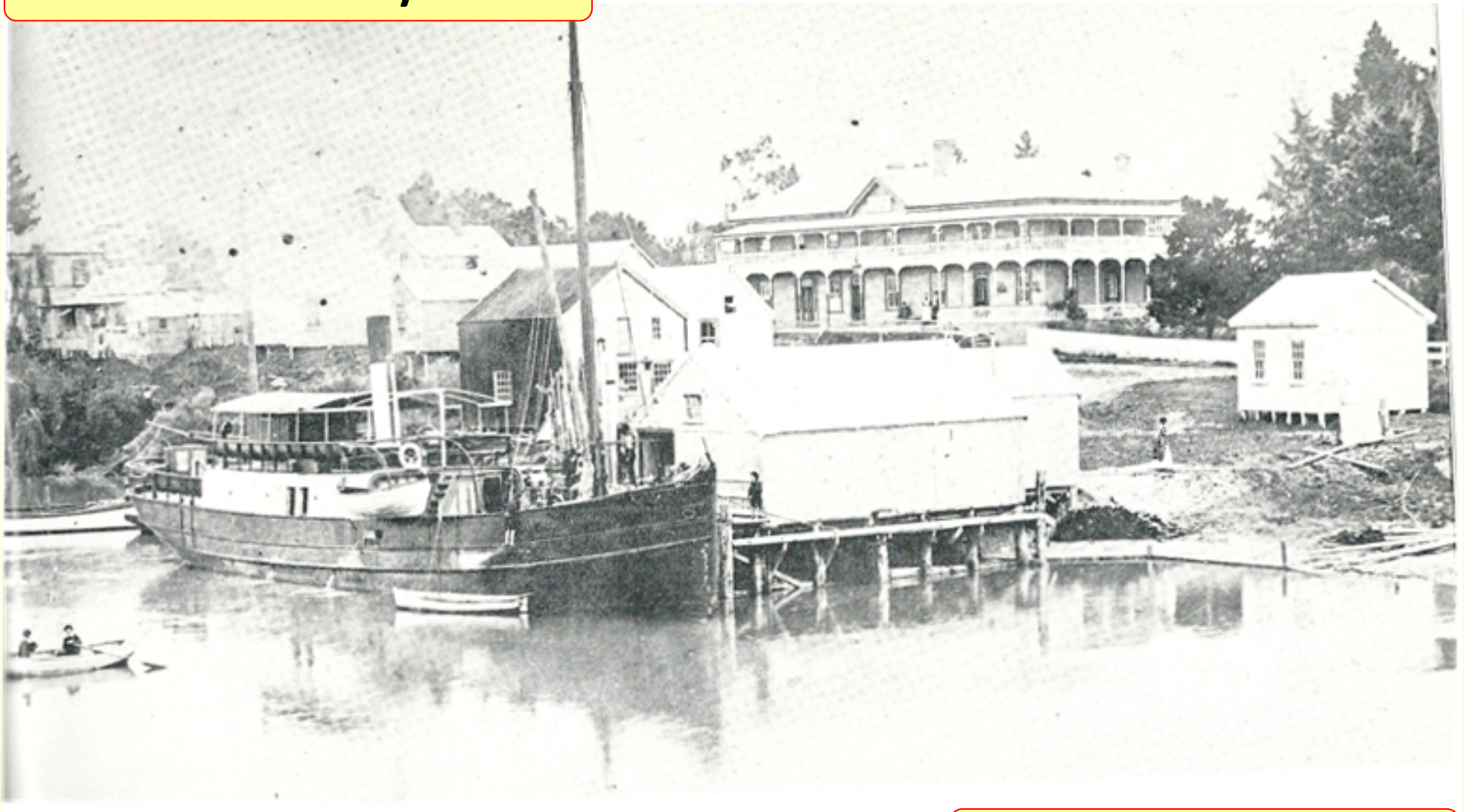


Manukau Harbour

NZ's 2nd largest harbour



The History



Waiuku Township

Harbour Ferry arriving at the Huia Wharf from Onehunga



Huia and the Harbour ferry Awhitu

Photo Reproduced from "The Settlement of The Huia" by Norman Laing



Excursion steamer 'Weka' brings a party from Onehunga for the annual picnic at the little Huia Farm, about 1915.



Huia Wharf - 1946

One of the last ferries to service the harbour was the Awhitu



MHRS Presentation: Activities – 1. Water Quality

Goal: Kai you can eat safely, you can swim safely, anywhere in the harbour

What we've been doing

- *Opposed Central Interceptor; appealed decision and negotiated tighter controls on emergency discharges to harbour*
- *Unsuccessfully sought 5 year review of condition of harbour as provided in Watercare's discharge consent; Auckland Council declined to do it*
- *Engaged and funded AUT development of RFID's to identify and remove cross connections*

What we're planning to do

- *Establish bottom line: no net increases in wastewater discharges to harbour; reduce MTP discharges*
- *Work with Watercare on alternatives to Manukau Harbour wastewater discharges for southern development and SW SHA; Technology innovation? Reuse?*
- *Continue independent scientific evaluation of Auckland Council and Watercare monitoring data and reports; assessment of harbour's health*
- *Support MHF request for hydrodynamic modelling*
- *Pursue research on declining fish stocks*

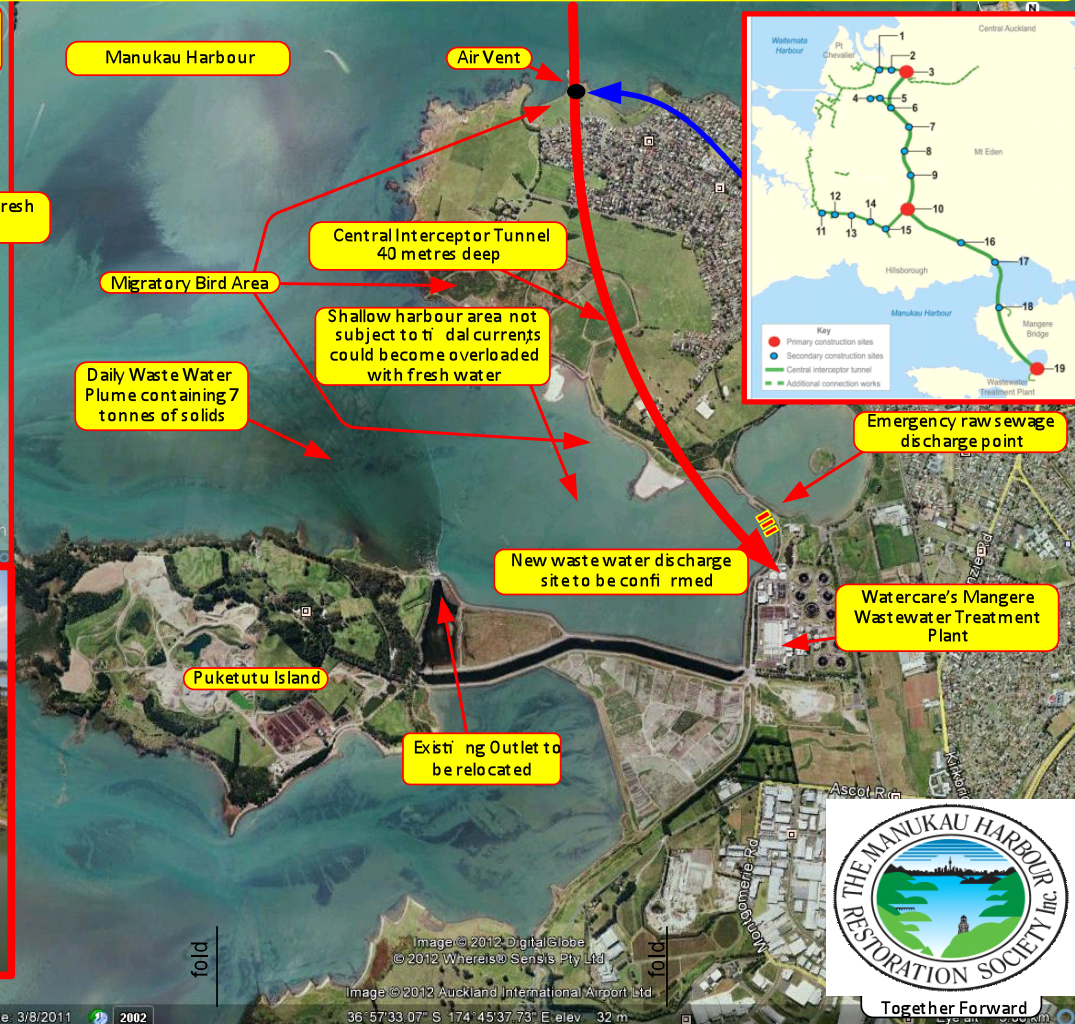


Watercare's \$800 million Central Interceptor Project

This \$800 million project is to be funded by all Watercare customers within the Auckland Region to improve the water quality of the Waitemata Harbour. A cocktail of both stormwater and raw sewage from Westmere through to Avondale will be transported in a 14km long 4 metre diameter tunnel to Watercare's Mangere Waste Water Treatment Plant where it will be processed and then discharged into the Manukau Harbour. The Watercare plant currently discharges some 360,000,000 litres (equivalent of 9000 tanker and trailer loads) into the Manukau Harbour every 24 hours. This project will not address or improve the water quality of the Manukau Harbour where Watercare has consents to continue discharging treated waste water and raw sewage during storm events and equipment failure for the next 30 years. The Manukau is New Zealand's 2nd largest harbour and its importance to Auckland as a recreational water space should be acknowledged. The Manukau Harbour should be returned to its former quality and not be the recipient of Auckland's 360,000 tonnes of treated waste water and 7 tonnes of solids that it discharges into the harbour each day. You should be able to catch fish, gather shellfish and swim anywhere in the Manukau Harbour in a safe manner without concerns that the quality of the water has been compromised. Watercare Services Ltd, a wholly owned Auckland Council subsidiary, must start to show greater Corporate Social Responsibility (CSR) towards the Manukau Harbour and ensure that the harbour is not further compromised.

The Watercare Central Interceptor Hearing
commences on the 29th July through to the 9th August at the Manukau Room,
Ground Floor West Annex Manukau Civic Building 31-33 Manukau Station Rd
Manukau

Submission WATERCARE July 2013, v3.d



MHRS Presentation: Activities –

2. Port of Onehunga

Goal: Re-establish the Port of Onehunga as the public hub of the whole harbour – ferry and water transportation, recreation, visitor amenities, fishing industry, emergency services

What we've been doing

- *Conducted visitor and resident study of harbour environs with AUT; Thanks to MHF and 9 local boards for funding; provided inventory of tourism resources*
2013-2014 Manukau Harbour Visitor and Resident Survey
http://www.aucklandcouncil.govt.nz/EN/environmentwaste/coastalmarine/manukauharbour/Documents/NZTRI_MHRS_Report.pdf
- *Study showed majority support ferry service and public access at Port*
- *Led University of Auckland Architecture student final projects conceptual ideas for reuse*
- *Worked with Cllr Denise Krum to have Panuku Development Auckland (PDA) designate Onehunga & Port a flagship urban regeneration area; PDA negotiating transfer of Port from POAL to PDA; Thanks to Cllr Krum and MHF Chair Jill Naysmith for ongoing support*

What we're planning to do

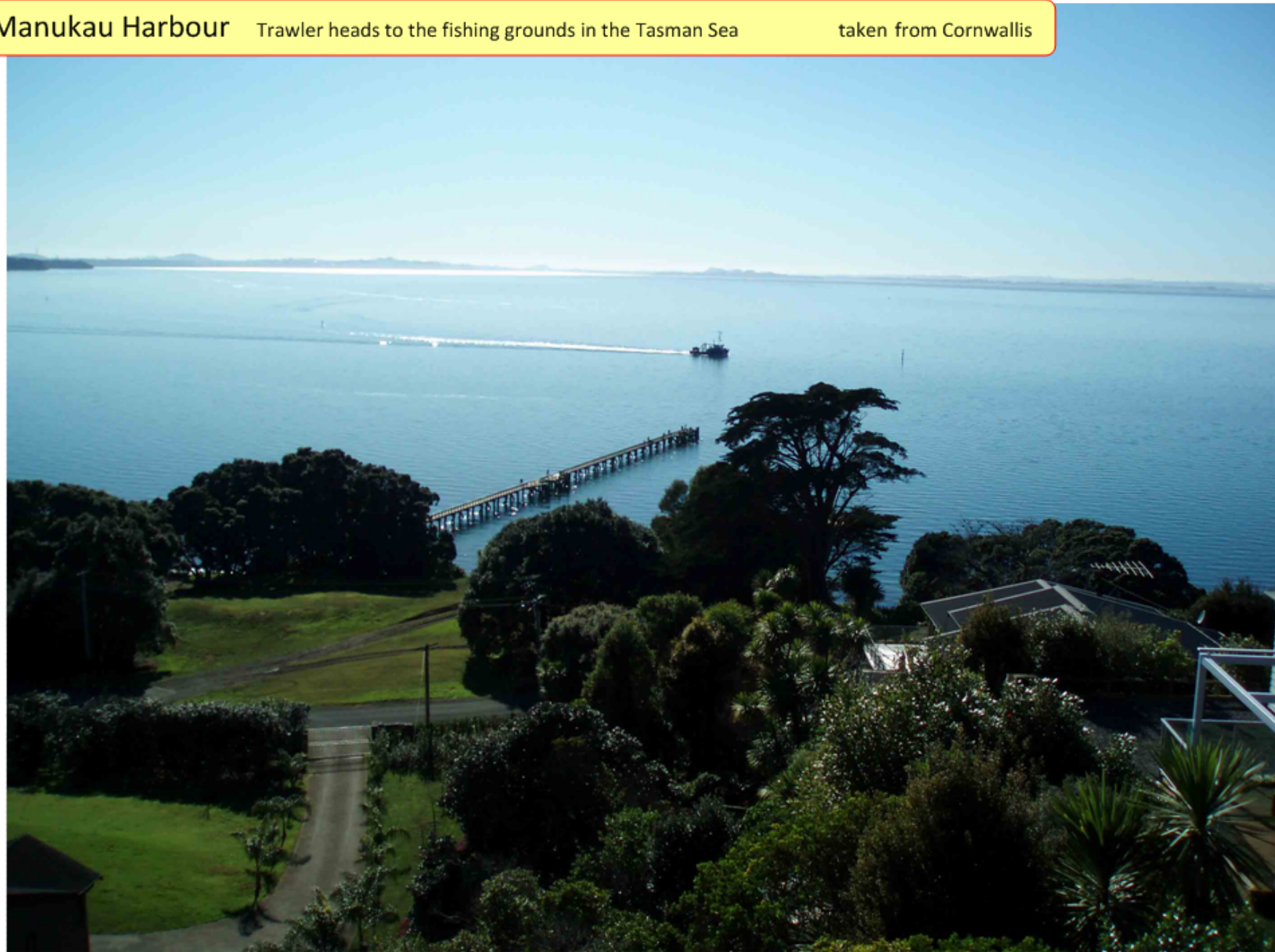
- *Working closely with PDA, Cllr Krum on Port redevelopment planning and connections to Onehunga centre*
- *Working with AT and NZTA on acceptable E-W Connection options and New Old Mangere Pedestrian Bridge replacement designs that enhance access to and redevelopment of the Port*



Manukau Harbour

Trawler heads to the fishing grounds in the Tasman Sea

taken from Cornwallis



MHRS Presentation: Activities – 3. Infrastructure

Goal: Infrastructure investments that improve harbour environs and harbour access

Two major projects: East-West Connection; New Old Mangere Pedestrian Bridge (NOMB)

What we've been doing

- *Input into E-W Connection design options;*
 - *cut and cover proposal preferred to protect Port access;*
 - *design must facilitate Port redevelopment and access links to central Onehunga and train station*
- *Submitted to design process and consent for old Mangere Pedestrian Bridge replacement;*
 - *design must safely accommodate all users;*
 - *open up boat access to enhance restoration and use of Mangere Inlet*
- *Have appealed NOMB resource consent*
- *Monitoring other proposed transportation investments*

What we're planning to do

- *Continuing appeal of NOMB consent to include lifting section and improve safety and landings at north and south ends*
- *Promoting E-W Connection options:*
 - *protect Port and access to Onehunga through cut and cover design*
 - *enhance restoration of harbour foreshore*
 - *contain capacity for underground transmission lines*



MHRS Presentation: Activities –

4. Transmission lines

Goal: Remove transmission lines from Manukau Harbour communities and harbour foreshore by undergrounding in transportation ROWs

What we've been doing

- *Worked with David Holm (Puketapapa Local Board with support from MHF, M-T, M-O, H-M, Whau Local Bds) and petitioned Parliamentary Select Committee;*
 - *conducted research and drafted submissions to create national fund for undergrounding*
 - *resulted in Select Committee enquiry*
- *With David Holm, ensured capacity for future undergrounding in Waterview Tunnel*
- *Multiple Unitary Plan submissions to incorporate support for undergrounding in Objectives, Policies, Rules*

What we're planning to do

- *Continuing to push for undergrounding transmission lines in major transportation projects – E-W Connection, NOMB replacement*
- *Supporting national funding mechanism*
- *Working with Transpower on specific undergrounding options*



Transpower's Transmission Lines through Auckland Councils Central Isthmus Area



MHRS Presentation: Transmission lines



MHRS Presentation: Activities – 5. Access

Goal: Increase recreational access to foreshore and harbour

What we've been doing

- *Fought unsuccessfully for improved design of Mangere All-Tide Ramp*
- *Reopened access for Waka Ama to Mangere Inlet*
 - *KiwiRail mangrove removal*
 - *Mangere Waterfront Reserve boat ramp and mangrove removal*
- *Unitary Plan submissions – regulations should allow restoration for improved access and safety as well as “protect and enhance”*

What we're planning to do

- *Investigating jetty at Clark's Beach*
- *Promoting public all tide access as part of Port of Onehunga redevelopment*
- *Seeking lifting section in NOMB to reopen Mangere Inlet to boats*
- *Investigate improved boat/people access around harbour eg Little Huia*



Bi Annual Portage Crossing between the Waitemata & Manukau Harbours for Waka



Bi Annual Portage Crossing between the Waitemata & Manukau Harbours for Waka



Cornwallis Public Wharf



SCOW Save Cornwallis Old Wharf was formed in July 1994 to rescue the aging Cornwallis Wharf from impending demolition. It was the last of sixteen decaying wharves on the Manukau Harbour

The new wharf opened in July 1999.



MHRS Presentation: Activities – 6. Mangroves

Goal: Community–led mangrove removal to protect bird habitat and restore harbour access

What we've been doing

- *Obtained resource consent and removed mangroves from areas in Mangere Inlet; restored Waka Ama access*
 - *Thanks to funding support from Maungakiekie –Tamaki Local Board*
 - *Also Waiuku Mud Larks; PIPs; Mangere-Otahuhu Local Board*
- *18 months research with NIWA, OHS students and MHRS volunteers on mangrove growth in Mangere Inlet*
 - *Science Fair winner*
 - *Obtained data on speed of growth, best months for removal*
- *Unitary Plan submission – use 1985 (not 1996) as date for removal without resource consent, based on harbour-wide photos*

What we're planning to do

- *Will assist community-led removal projects when asked*
- *Promoting unique rules for Manukau Harbour*
- *Continuing research into mangroves in Manukau Harbour: alternative removal methods, effects of mangroves on bird habitat, water quality*



Mangrove Removal at Westfield Otahuhu



The Waiuku Mudlarks trained the local Waka Ama people on the finer points of Mangrove Removal at Westfield Otahuhu



MHRS Presentation: Activities – 7. Birds and fish

Goal: Protect and enhance bird habitats; increase fish stocks

What we've been doing

- *Began Goodbye Godwits, now annual event in March at Ambury Regional Park*
- *Appealed Central Interceptor resource consent and negotiated stiffer conditions to protect bird feeding areas*
- *Raising issue of low level of fish stocks – illegal fishing? lack of enforcement? water quality? sedimentation? fresh water discharges?*

What we're planning to do

- *Pursuing Nature/Bird Centre on foreshore showcasing harbour's natural history*
- *Continuing research into water quality*
- *Promoting research into alternatives to increase fish stocks*
- *Seeking better enforcement*

MHRS Presentation: Activities – 7. Birds and fish



MHRS Presentation: Activities – 8. Clean Up

Goal: Improve environmental condition of the harbour

What we've been doing

- *Organized beach clean ups*
 - *Thanks to MHF, Sustainable Coastlines, Watercare Harbour Clean Up Trust, Waitakere Ranges Local Board, Puketapapa Local Board, Friends of Farm and Foreshore, Ambury Regional Park for support during Seaweed 2015, 2016*
- *Supported oyster shell removal days*
- *Acquired Argo to assist community clean ups*
- *Supported Sea Cleaners rubbish removal; now will have boat on harbour permanently*
 - *Thanks to Watercare and Watercare Harbour Clean Up Trust*

What we're planning to do

- *Funding AUT development of oyster shell crusher and reuse*
- *Continue support of community clean ups*



MHRS Presentation: Activities – Seaweed Harbour-wide Clean Up



Waikowhai Bay Oyster Shell Clean Up



ARGO 8 wheel drive tracked vehicle can carry 4 people and operate in thick mud to assist with oyster and mangrove removal programs . Available to harbour Groups



MHRS Presentation: Activities – 9. Plans

Goal: Improve environmental condition and use of the harbour through common vision with integrated planning, actions and investment

What we've been doing

- *Written multiple submissions to plans (eg Auckland Plan, Regional Land Transportation Plan, Unitary Plan Stormwater Plans, Long Term Plan and Budgets.....)*
- *Spent hundreds of hours on Unitary Plan hearings*
- *Conclusion: ad hoc decisions being made for harbour by individual Council staff members and CCO's;*
 - *lack of science and data underpinning decisions; lots of personal opinions*
 - *no “whole of harbour” approach*
 - *no multifaceted, community-based vision for harbour eg how are recreation access and foreshore protection reconciled?*

What we're planning to do

- *Advocate for a community-led master plan for harbour and environs*



MHRS Presentation: Activities –

10. Management

Goal: Creation of an independent Manukau Harbour Authority to lead stewardship and consistent restoration and management of harbour

What we've been doing

- *Supporting MHF – leading the change*
- *Advocating for emergency services*

What we're planning to do

- *Promote permanent location of emergency services and enforcement on harbour (eg Police, Coast Guard, MPI, Harbour Master etc)*
- *Continue to work with MHF – needs budget and staff*
- *Support creation of community and iwi – based authority with independent revenue and staff*



MHRS Presentation: Summary

Key Action Items

- *Fund MHF's request for hydrodynamic modelling now*
- *Provide MHF with staff and independent budget*
- *Support further research into water quality and effect of discharges on fish stocks and bird habitat; conduct 5 year Watercare consent review of effect of discharges on harbour*
- *Pursue innovative solutions to southern wastewater treatment and disposal*
- *Support establishment of a harbour nature/bird centre*
- *Support PDA-led return of Port of Onehunga to an asset for the entire harbour*
- *Promote cut and cover design for E-W Connection to enhance Port redevelopment*
- *Promote redesign of NOMB to incorporate lifting section, user safety*
- *In collaboration with harbour community, develop a multifaceted vision and plan for the harbour*
- *Create a community and iwi-based harbour authority*

Overall - *Change in mindset of decisionmakers, CCOs, Council staff*

- *More science*
- *More honesty*
- *More innovation*
- *More collaboration*
- *More funding*



MHRS Presentation: Thank you

www.mhrs.org.nz

